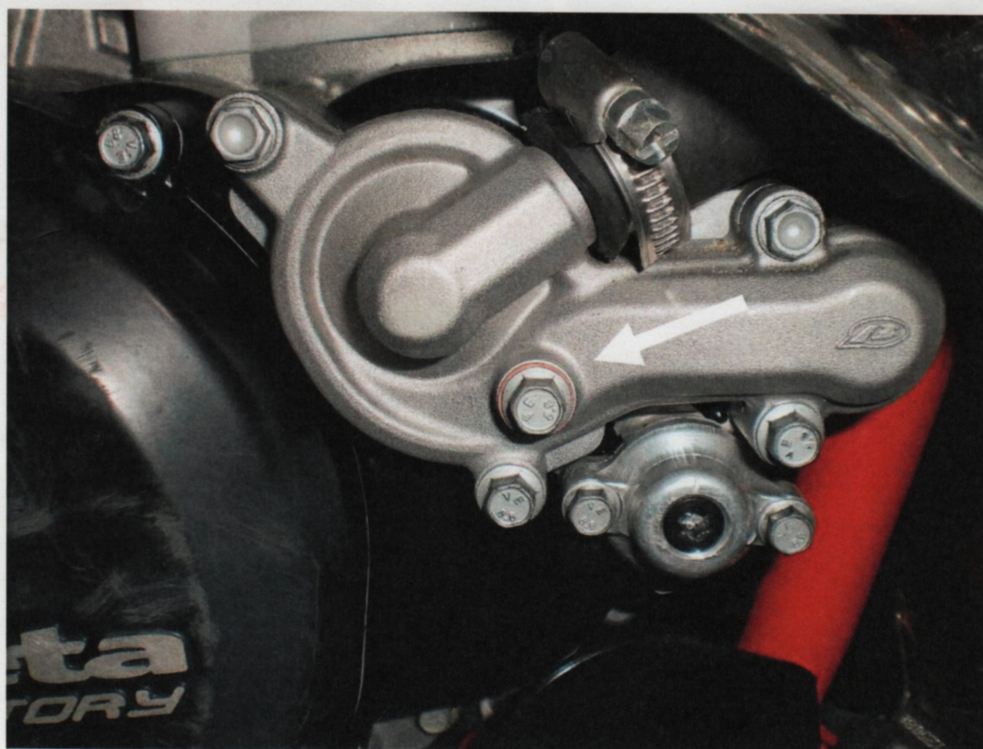


**The kit includes:**

- 021390020 000	Fan KSP - 0016	1
- 026390080 000	Junction with termoswitch	1
- 026390110 000	Fan stirrup RR2t	1
- 026400080 000	Fan wiring RR2t	1
- 026440090 000	Fan kit RR2t assembly instructions	1
- 1515240 000	16/27 Metallic band	2
- 3123600 000	Self-tapping TMTIC $\varnothing 4,2 \times 13$ screw	3
- 3129850 000	TTLIC 5.12 screw	2
- 2558065 000	M5 Teknofix platelet Art. PM0531P	3
- 3129885 000	TTLIC 5.35 screw	1

**To assembly the kit, please proceed as follows:**

1. Take off the saddle and the fuel tank with both the fairing sides.
2. Remove the screw shown in Fig. 1 and drain all the cooling water, then remove both the radiator's grid, the left one and the right one.



**Fig. 1;**



3. Mark 3 points over the two radiator's side corresponding to the 3 holes of the fan's stirrup. On the right side of the radiator, the lowest point must be 5 cm far from the radiator's low metallic edge, as shown in Fig. 2.

Drill with  $\varnothing 3,5$  the outer side of the radiator over the three marks.

**CAUTION!!! Be carefull while drilling: drilling to deep gets unusable the radiator.**



Fig. 2;

4. Screw the fan to the stirrup using the small parts included in the kit (N°2 5.12 screws, 5.35 screws and N°3 M5 Teknofix platelets), as shown in Fig. 3a and 3b.

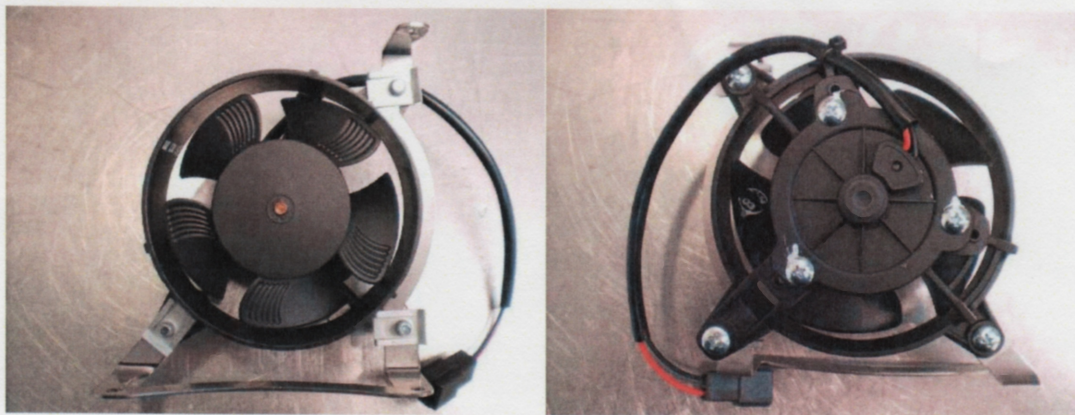
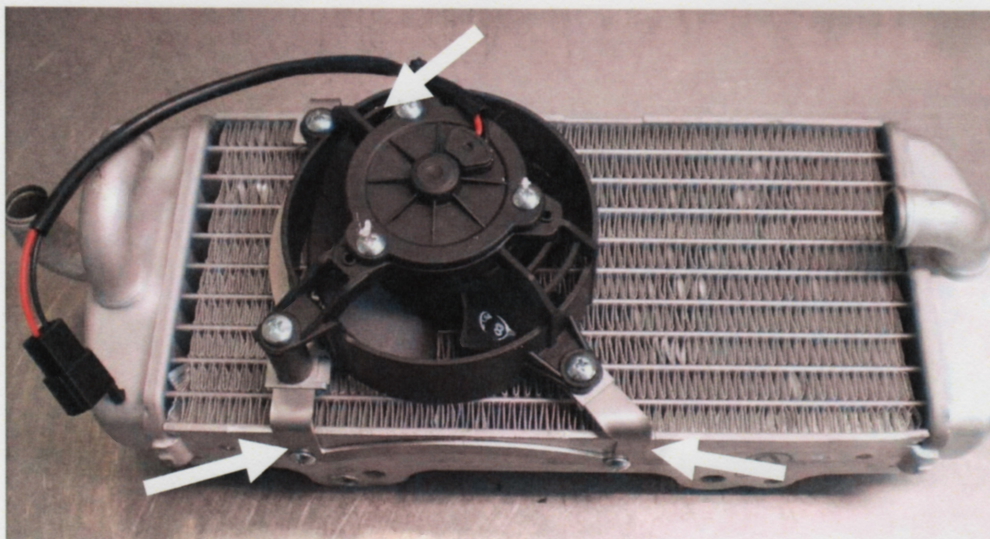


Fig. 3a and 3b;

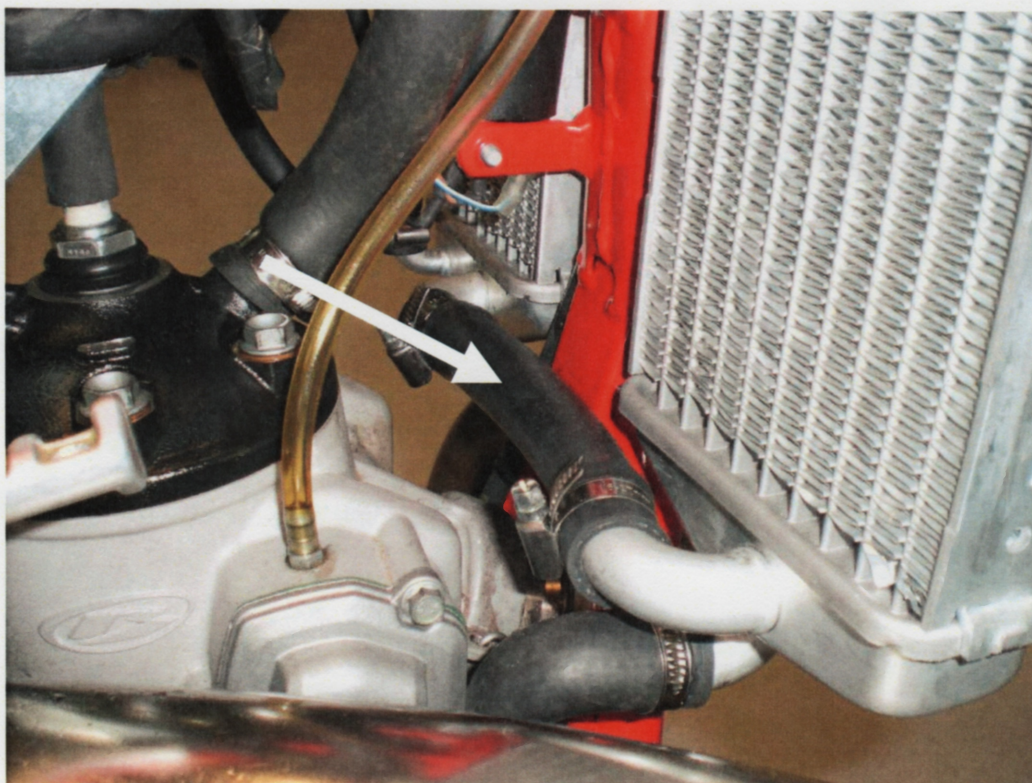


5. Fix the fan on the radiator screwing the N°3 self-tapping  $\varnothing 4,2 \times 13$  included in the kit.



**Fig. 4;**

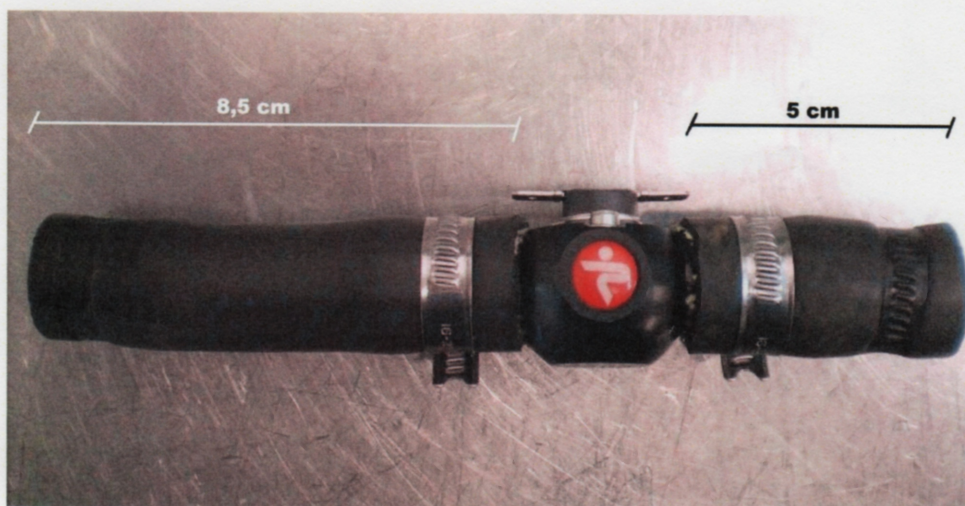
6. Get off from the vehicle the horizontal low straight cooling water tube. Cut it 5 cm far from one side.



**Fig. 5;**

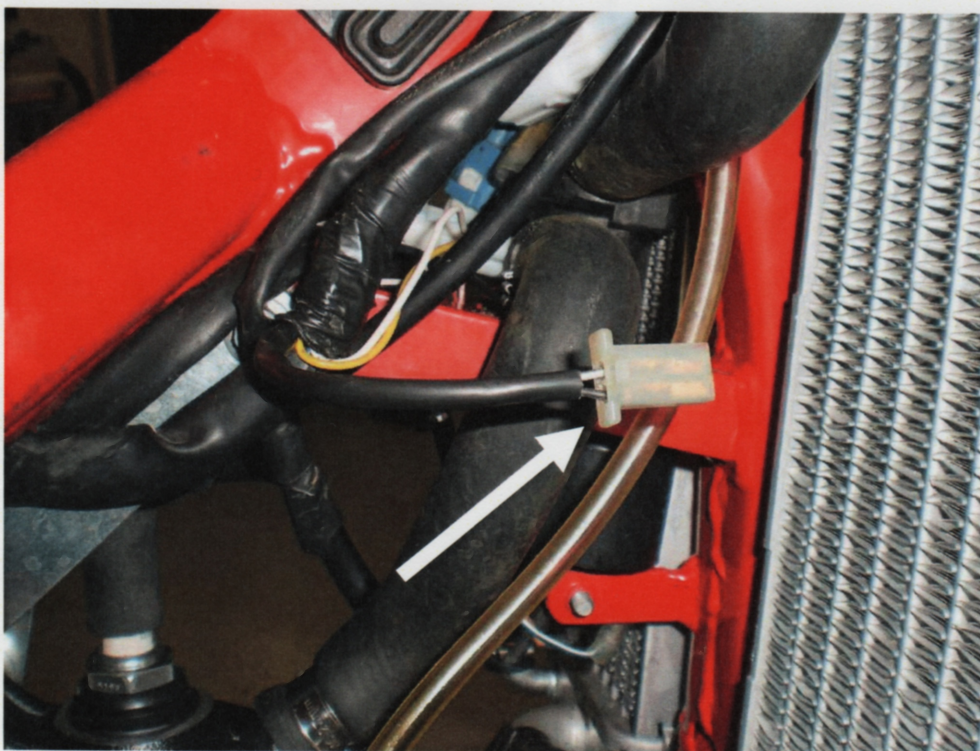


- 7 Shorten the longest part of the tube previously cut. It must be 8.5 cm long. Put the junction with the termoswitch between the two tube parts and tighten it with the 16/27 metallic bands included in the kit. The ensemble is shown in Fig. 6



**Fig. 6;**

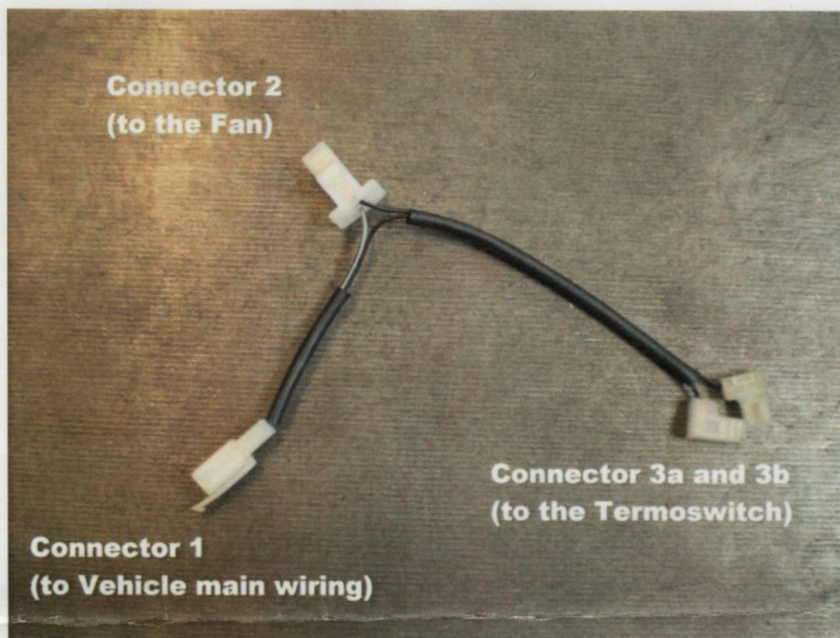
8. Identify fan's power supply connector on the vehicle wiring (two ways free connector with incoming black and grey-black wires).



**Fig 7;**

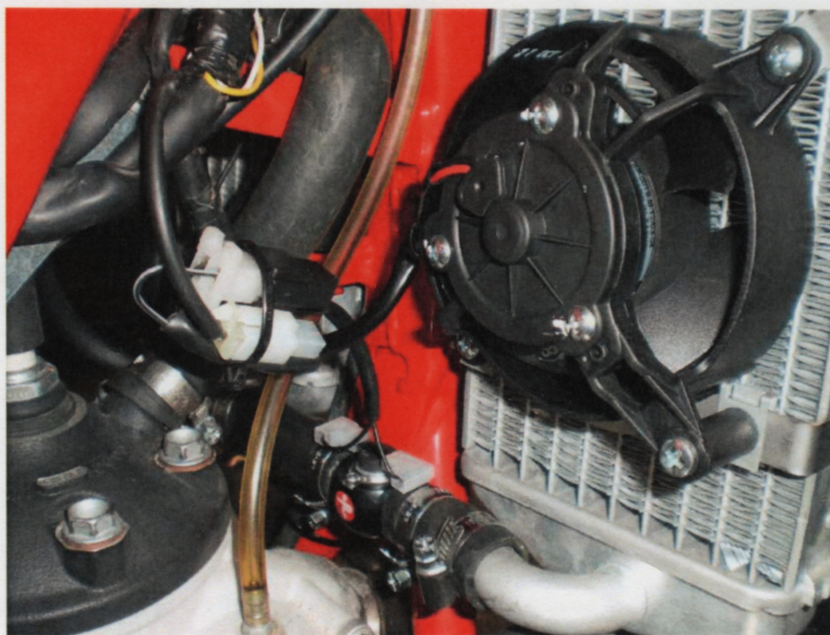


9. Connect fan wiring Connector 1 with the free vehicle Connector previously identified.
10. Connect fan wiring Connector 2 directly with fan connector
11. Connect fan wiring 3a and 3b with both angular thermoswitch connectors.



**Fig. 8;**

12. Reassemble the tubes with thermoswitch and the radiator with fan on the vehicle. Collect the connectors and the wires with a ty-rap. Ensemble appears as shown in Fig. 9.



**Fig. 9;**

13. Fill the cooling circuit following the instructions of the vehicle user manual.